

CEDAR SIDING AND TRIM

CLEAR CEDAR SIDING GRADES

Clear bevel siding is graded for smooth face use with the exception of Rustic which is graded for saw textured use only.

CLEAR V.G. HEART

This is the highest bevel siding grade. All Clear V.G. Heart grade is sawn vertical grain (edge grain) and is kiln dried. Pieces have a smooth face of decay-resistant heartwood and are free from growth characteristics that affect appearance or performance. Pieces have excellent dimensional stability and hold finishes exceptionally well.

Available solid wood or finger-joined.



A CLEAR

This is a fine appearance grade that allows only slightly more growth characteristics than Clear Heart. Pieces are of mixed grain. These mixed grain (vertical and flat) pieces are graded from the surfaced face.

Available solid wood or finger-joined.



RUSTIC

Rustic grade bevel siding is recommended for use as sidewall covering where the distinctive charm of a rustic saw textured appearance is desired. This grade allows limited characteristics that do not detract from serviceability.

Available solid wood or finger-joined.



KNOTTY CEDAR SIDING GRADES

SELECT KNOTTY

Knots and other natural features define the visual character of knotty sidings. In Select Knotty grade, knots are sound and tight. Available rough or dressed, kiln-dried or unseasoned and smooth or saw textured. Some companies may supply this grade with knots glued on the reverse face.



QUALITY KNOTTY

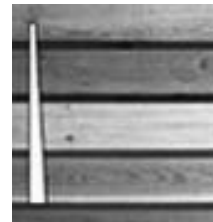
In this grade, natural growth characteristics are not limited as stringently as in Select Knotty. Cross cutting may be required on some pieces to yield tight knotted siding.



WESTERN RED CEDAR SIDING

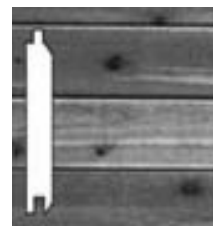
BEVEL CEDAR SIDING

- 1/2" x 6" Clear VG Heart Bevel – **In Stock**
- 1/2" x 8" Clear VG Heart Bevel – **In Stock**
- 1/2" x 6" A Clear Bevel – **In Stock**
- 1/2" x 8" A Clear Bevel – **In Stock**
- 1/2" x 6" Rustic Bevel – **In Stock**
- 1/2" x 8" Rustic Bevel
- 3/4" x 8" Clear VG Heart Bevel – **In Stock**
- 3/4" x 10" Clear VG Heart Bevel – **In Stock**



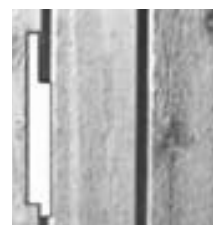
TONGUE & GROOVE CEDAR SIDING

- 1" x 6" Clear VG Heart Tongue & Groove
- 1" x 8" Clear VG Heart Tongue & Groove
- 1" x 6" A Clear Tongue & Groove – **In Stock**
- 1" x 8" A Clear Tongue & Groove
- 1" x 6" Select Knotty Tongue & Groove – **In Stock**
- 1" x 8" Select Knotty Tongue & Groove
- 1" x 6" Quality Knotty Tongue & Groove
- 1" x 8" Quality Knotty Tongue & Groove



CHANNEL CEDAR SIDING

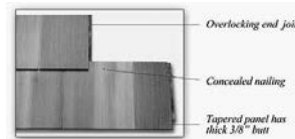
- 1" x 6" Clear VG Heart Channel
- 1" x 8" Clear VG Heart Channel
- 1" x 6" A Clear Channel
- 1" x 8" A Clear Channel
- 1" x 6" Rustic Channel
- 1" x 8" Rustic Channel – **In Stock**



CEDAR SHINGLE PANEL – SHAKERTOWN®

CRAFTSMAN CEDAR SHINGLE PANEL

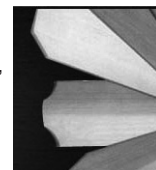
The Shakertown® Craftsman 1-Course Cedar Shingle Panel is manufactured using only the finest Western Red Cedar vertical-grain heartwood, the new Shakertown Craftsman Panel features a full plywood back, a thick 3/8" shingle



butt and overlocking end-joints for a seamless appearance. Shakertown Craftsman Panels go up 6 times faster than individual shingles and can be installed with a pneumatic nailer. The blind/concealed nailing creates a true, traditional shingle appearance. The panels are 8' long and available in an exposure size of 7", 4-1/2" and 14" (14" exposure product is face nailed). Shakertown Craftsman Panels are constructed with a classic keyway joint or tight contemporary joint between shingles. The panels are available with an even-butt or staggered-butt line to match any home style.

FANCY CUTS SHINGLE

Set your imagination loose with Fancy Cuts. For the perfect accent to a bay window, front entry or gable end. Different shapes can be combined for endless possibilities, giving you the chance to develop your own signature look. Each Fancy Cuts shingle is 100% clear, 100% edge grain Western Red Cedar. Natural variations in color and grain give each shingle its own unique look. All Fancy Cuts are precision cut and sanded. Buy individual Fancy Cuts shingles to mix-and-match patterns or create an original design. Fancy Cuts are packaged 96 pieces to the carton. One carton covers 25 sq. ft. when shingles are installed at the 7-1/2" exposure recommended for exteriors. For interior accents, a carton of Fancy Cuts covers 33 square feet when applied with a 10" exposure. Eight patterns are also available on a custom order basis in convenient 8-foot panels with 5" exposure. It's never been easier or more convenient to have the hand-crafted appearance of Fancy Cuts.



CEDAR SIDING SHINGLES STRIPS AND PANELS

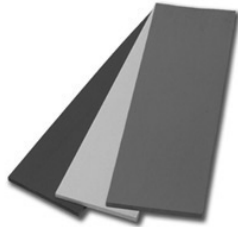
EASTERN WHITE CEDAR SIDING SHINGLES

When it comes to siding a house, nothing compares to eastern white cedar. It is warm, beautiful, and has proven reliable for over a century. White cedar shingles have great insulating features against cold and noise. It is also very durable and very little maintenance. It contains natural preservatives which protect it from rot and insects. Unlike other species that contain tannins, eastern white cedar can be stained just about every colour imaginable, from palest to darkest. We are the most important manufacturer of white cedar shingles in North America. At maibec, we have spent the last four decades improving the way white cedar shingles are made. Today, they are engineered to be so durable, you just might consider them high tech. Maibec offers you a 50-year warranty against wood decay, a 15-year warranty on two coats of solid stain (extendable up to 30 years) and a 5-year warranty on labor. No warranty is offered on semi-transparent stain, clear solution or bleaching oil.



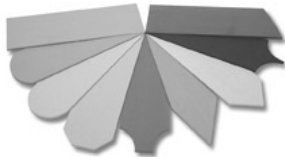
INDIVIDUAL SHINGLES – THE CLASSIC

The shingles are resquared and rebuffed for a beautiful natural finish that doesn't require additional on-site trimming.



VICTORIAN SHINGLES – THE TIMELESS STYLE

Whether you want a decorative look, or need to break up large sided areas, maibec offers you top quality shingles in an array of classic Victorian choices.



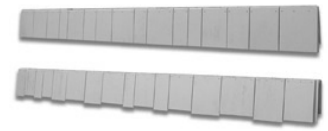
CEDAR STRIP

Pre-assembled Strip – Reduces Installation Time by up to 80%. maibec's cedar strips are engineered to be a more efficient way of installing shingles, without compromising the look or traditional integrity of the home. The systematic design guarantees alignment of keyway spacing over three successive courses, so shingles go up fast and look great. The strip is a solution to consider for big projects.



CEDAR PANEL

Pre-assembled Panel - Reduces Installation Time by up to 60%. Perfect for big projects, maibec's cedar panels are fabricated with shingles fastened to a plywood backer consisting of a layer of perforated asphalt felt and a moisture-eliminating rainscreen. Each panel is stapled front and back, then glued for maximum stability and durability. Available in-line and staggered



PRE-ASSEMBLED CORNER

Corners are the ideal finish with cedar panels



NANTUCKET™ FAMILY OF PRODUCTS

When nothing but the most beautiful will do, choose maibec's Nantucket family of shingles — a premium shingle with no defects. Every shingle has a velvet finish, perfect for our William E. Poole Series of traditional colors, or choose any color you can imagine with our exclusive TrueMatch® process. Available in individual shingles, Victorian Style and pre-assembled Cedar Strips, our Nantucket shingles are truly the best money can buy.



KENNEBUNK™ FAMILY OF PRODUCTS

Maibec's Kennebunk family of shingles are designed to combine great appearance and affordability in a select grade of shingle. There are no visible defects on the exposed face, though you may find some knots or natural characteristics on the shingle. Kennebunk shingles can be TrueMatch® stained any color for a completely customized and individual look, and are available in individual shingles or pre-assembled Cedar Strips.



BAR HARBOR™ FAMILY OF PRODUCTS

For time-honored, rustic beauty, maibec® offers its Bar Harbor shingles. These are shingles with plenty of character. Any visible sound knots or slight color variations will simply become part of the overall charm and beauty of the home. As with all maibec® white cedar, Bar Harbor shingles can be factory coated with TrueMatch® 100 or TrueMatch® 200 to create any look you choose.

