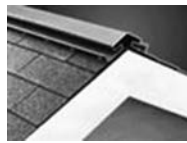


## ROOF VENTILATION

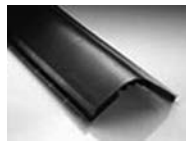
### RIDGE VENTS- AIR VENT INC.



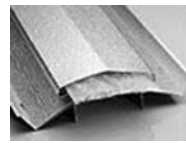
ShingleVent II



Multi-Pitch FilterVent



VenturiVent Plus



FilterVent



Rolled Ridge Vent



Peak Performer™

PRODUCT	DESCRIPTION	SIZE	NET FREE AREA
<b>SHINGLEVENT II</b>	12" wide Shingle-over ridge vent	4'	18 sq. in. per ft.
<b>SHINGLEVENT II-9</b>	9" wide Shingle-over	4'	16 sq. in. per ft.
<b>SHINGLEVENT II-7</b>	7" wide Shingle-over	4'	16 sq. in. per ft.
<b>MULTI-PITCH FILTERVENT</b>	Aluminum ridge vent	10'*	18 sq. in. per ft.
	Aluminum ridge vent	8"	18 sq. in. per ft.
<b>VENTURIVENT PLUS</b>	Shingle-over ridge vent	4'	18 sq. in. per ft.
<b>HIP RIDGE™ VENT</b>	Filtered Shingle-over hip vent	4'	12 sq. in. per ft.
<b>ROLLED RIDGE VENT</b>	Shingle-over ridge vent in a roll	20'	18 sq. in. per ft.
<b>PEAK FILTERVENT</b>	Aluminum peak vent for contemporary roof designs	Venting Pack	9 sq. in. per ft.
<b>FLASH FILTERVENT</b>	Aluminum vent for roof/wall junctions	Venting Pack	9 sq. in. per ft.
<b>UTILITY FILTERVENT</b>	Aluminum vent for specialty applications	Venting Pack	9 sq. in. per ft.
<b>PEAK PERFORMER™ I</b>	Shingle-over ridge vent in a roll (unfiltered)	28'	12 sq. in. per ft.
<b>PEAK PERFORMER™ II</b>	Shingle-over ridge vent in a roll (filtered)	28'	12 sq. in. per ft.

### EDGE VENT- AIR VENT INC.



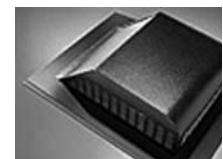
PRODUCT	DESCRIPTION	SIZE	NET FREE AREA
<b>THE EDGE™ VENT</b>	11.4" wide Shingle-over intake vent	4'	9 sq. in. per ft.

The Edge Vent provides proper intake ventilation for homes with little or no overhang. It's a roof-top installed, shingle-over intake vent design. It can be used to supplement existing soffit or under-eave vents as well. The Edge Vent provides 9 square inches of net free area per linear foot to balance with ShingleVent® II ridge vents and other Air Vent exhaust vents. Roof-top installation keeps the roofer on the roof. Internal ventilating baffles and filter provide weather protection. Constructed of same material as industry-trusted ShingleVent II ridge vents. Each 4-ft piece has integrated end plugs on each end. Radius design allows for increased airflow. 3/4" low profile. Minimum roof pitch: 3/12. Setting tabs on bottom underside assist with installation. Key component of The Balanced System® for Attic Ventilation.

### STATIC VENTS- AIR VENT INC.



PRODUCT	NET FREE AREA (SQ. IN.)	ROOF PITCH
<b>SLA SLANT ALUMINUM</b>	50/pc.	3/12 to 12/12
<b>RVG 51HC HIGH COLLAR ALUMINUM</b>	51/pc.	3/12 to 8/12
<b>RVA 51 SQUARE ALUMINUM</b>	50/pc.	3/12 to 8/12
<b>RVG 51 SQUARE GALVANIZED</b>	50/pc.	3/12 to 8/12
<b>RVA 40 SLANT ALUMINUM</b>	40/pc.	3/12 to 12/12
<b>RVG 40 SLANT GALVANIZED</b>	40/pc.	3/12 to 12/12
<b>RVG 55 SLANT GALVANIZED</b>	50/pc.	3/12 to 12/12
<b>SLP SLANT PLASTIC</b>	61/pc.	3/12 to 12/12
<b>SQP SQUARE PLASTIC</b>	61/pc.	3/12 to 8/12
<b>B-144 GALVANIZED STEEL DOME</b>	144/pc.	3/12 to 8/12
<b>B-144 PLASTIC DOME</b>	144/pc.	3/12 to 8/12
<b>WIND TURBINES</b>	95/12" turbine 132/14" turbine	3/12 to 12/12 3/12 to 12/12



Roof Louvers



Wall Louvers



Wind Turbines

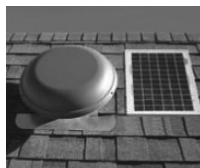
## POWER VENTS- AIR VENT INC.



PowerCool™ Roof-Mounted Power Attic Vent



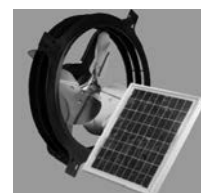
SolarCool™ Attic Vent



SolarCool™ Attic Vent With Separate Solar Panel



Attic Aire™ Gable-Mounted Power Vent



Attic Aire™ Gable-Mounted Solar Vent

PRODUCT	DESCRIPTION	CFM	FOR ATTICS UP TO:
<b>POWERCOOL PLUS™ 15</b>	Automatic Thermostat and Humidistat	1500	2100 square feet
<b>POWERCOOL PLUS™ 12</b>	Automatic Thermostat and Humidistat	1170	1650 square feet
<b>POWERCOOL™ BR28</b>	Automatic Thermostat	1320	1900 square feet
<b>POWERCOOL™ BR26</b>	Automatic Thermostat	1170	1650 square feet
<b>POWERCOOL™ BR26 PLASTIC DOME</b>	Automatic Thermostat	1170	1650 square feet
<b>ATTIC AIRE™ WCGB</b>	Automatic Thermostat	1320	1900 square feet
<b>ATTIC AIRE PLUS™ APGH</b>	Automatic Thermostat and Humidistat	1620	2300 square feet
<b>SOLARCOOL™ ATTIC VENT</b>	Solar panel collects and delivers power in direct sunlight	Up to 800	1,200 square feet
<b>SOLAR POWERED GABLE-MOUNTED ATTIC VENT</b>	Solar panel collects and delivers power in direct sunlight	Up to 800	1,200 square feet

## BATH OR DRYER VENT- AIR VENT INC.



PRODUCT	DESCRIPTION	SIZE
<b>BATH OR DRYER VENT</b>	Versatile Bath or Dryer Vent that attaches easily to the fan's ductwork. Durable black plastic material. Removable screen protects against debris. Dampened one-way vent.	4" diameter stem 3-7/8" stem length for easy positive connection

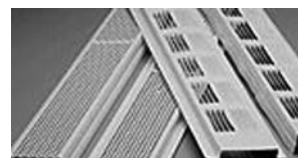


Bath or Dryer Vent

## ATTIC INTAKE VENTS- AIR VENT INC.



CONTINUOUS SOFFIT VENT			
PRODUCT	DESCRIPTION	SIZE	NET FREE AREA
<b>SV201</b>	Aluminum Continuous soffit vent (Retrofit)	2-3/4" x 96"	9 sq. in. per ft.
<b>SV202</b>	Aluminum Continuous soffit vent (New Construction)	2-3/4" x 96"	9 sq. in. per ft.
<b>SV351</b>	PVC Continuous soffit vent (Retrofit)	2-3/4" x 96"	9 sq. in. per ft.
<b>SV352</b>	PVC Continuous soffit vent (New Construction)	2-3/4" x 96"	9 sq. in. per ft.



Continuous Soffit Vents

UNDEREAVE VENTS			
PRODUCT	DESCRIPTION	SIZE	NET FREE AREA
<b>EV16424</b>	Aluminum	4" x 16"	28" pc
<b>EV16624</b>	Aluminum	6" x 16"	42" pc
<b>EV16824</b>	Aluminum	8" x 16"	56" pc



Undereave Vents

VENTED DRIP EDGE			
PRODUCT	DESCRIPTION	SIZE	NET FREE AREA
<b>VDE141</b>	Aluminum	10'	9 sq. in. per ft.



Vented Drip Edge

EDGE VENT			
PRODUCT	DESCRIPTION	SIZE	NET FREE AREA
<b>EVI</b>	PVC Continuous edge 3/4" low profile intake vent	4'	9 sq. in. per ft.



Edge Vent